

**Um novo estilo de IT**



# PPS em números

**148M\$ de Facturação**

Forecast de FY12  
59% HP Portugal  
170º Portugal

**#1 ou #2 em quota de mercado**

Nas varias categorias que operamos

**A Maior Base Instalada**

1.6 Milhões de Impressoras  
1.5 Milhões de PC's

HP PPS Portugal

**+ 7.800 Produtos dia**

900 Produtos de Impressão  
1000 Produtos de Computação  
5.900 Supplies

Mais de

**500 contas geridas**

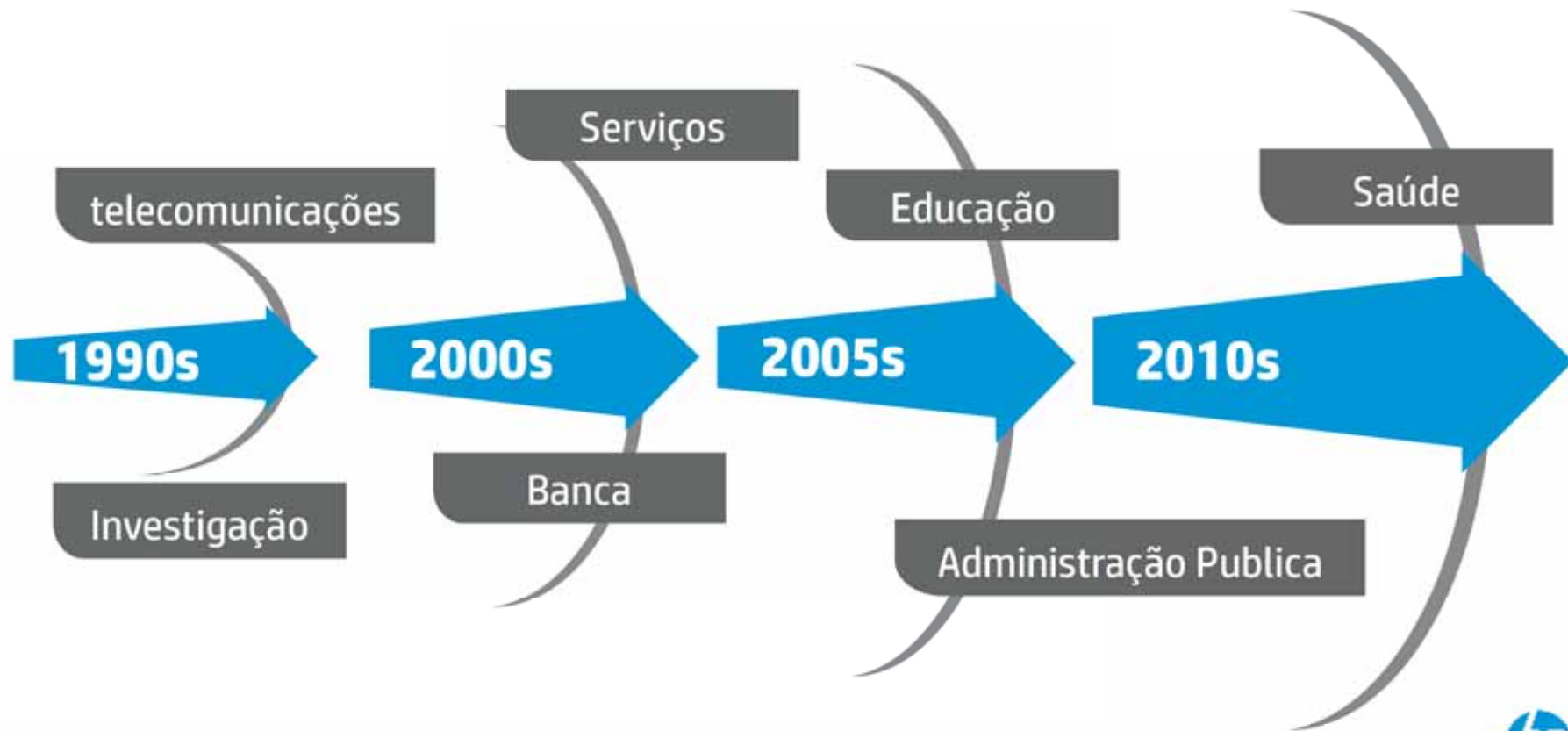
Mais de

**4.000 parcerios**

56 Golds + 93 PP + 4.000 Proximity

**16 parceiros de Pós-Venda**

# A nossa história



## Um novo estilo de IT

Apps

Universal access

**Geografias**

**Mobilidade**

Devices

**Cloud**

**Home-office**

**BYOD**

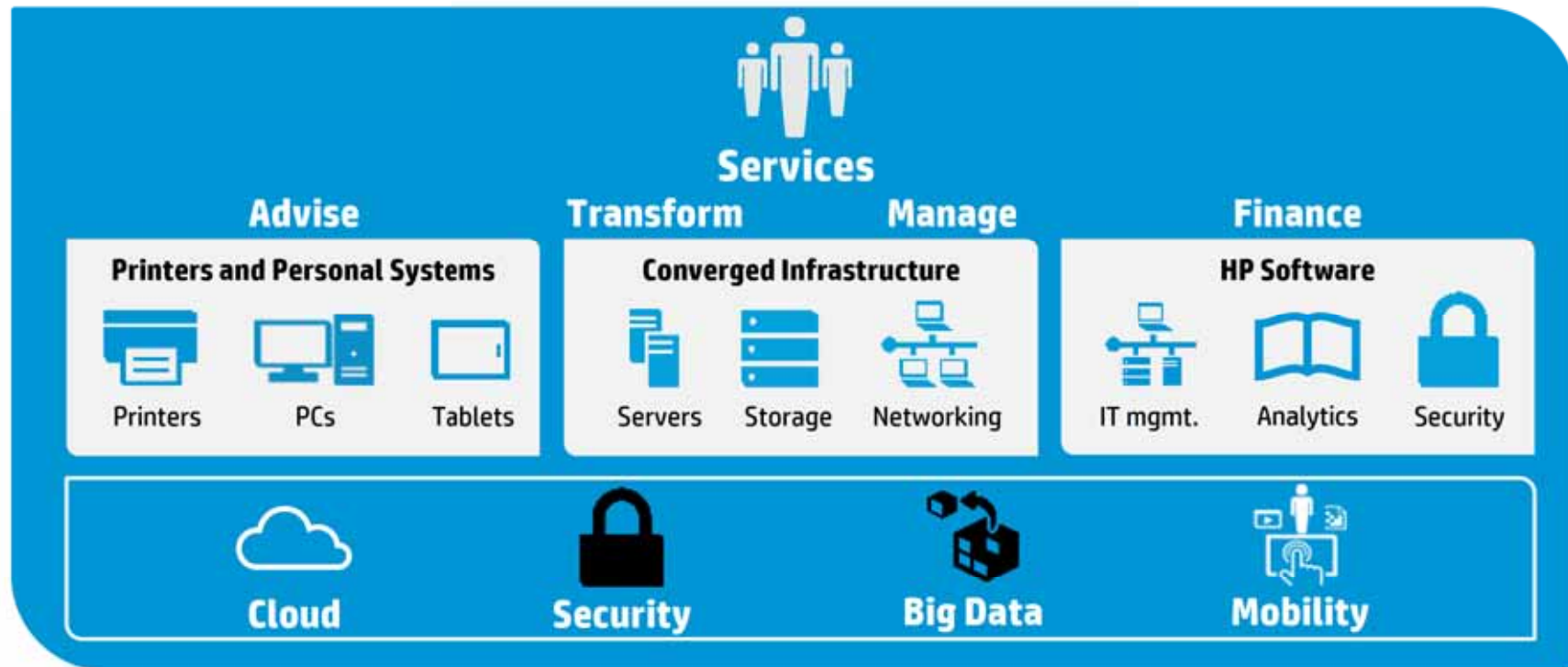
**utilizadores**

**Big Data**

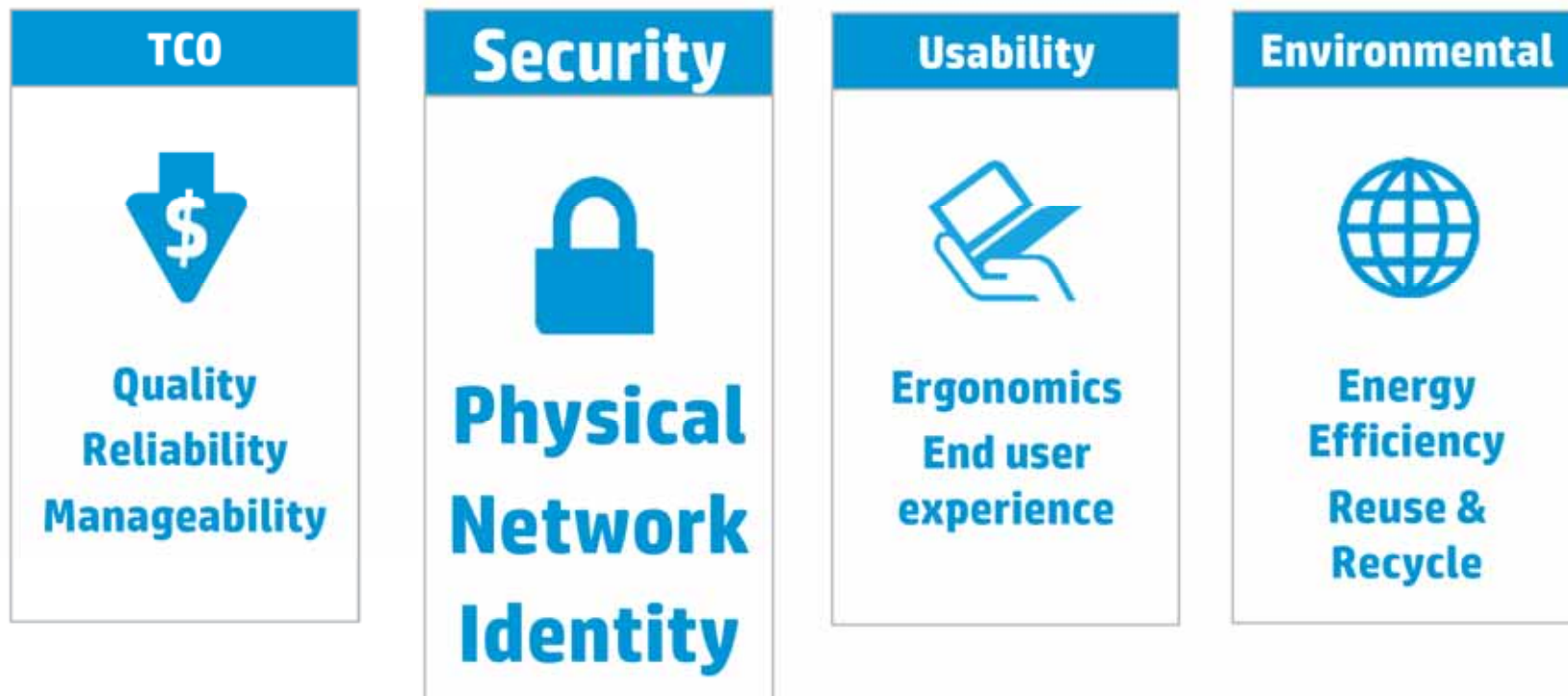
Mobile Print

Segurança

# Um novo estilo de IT – Soluções HP



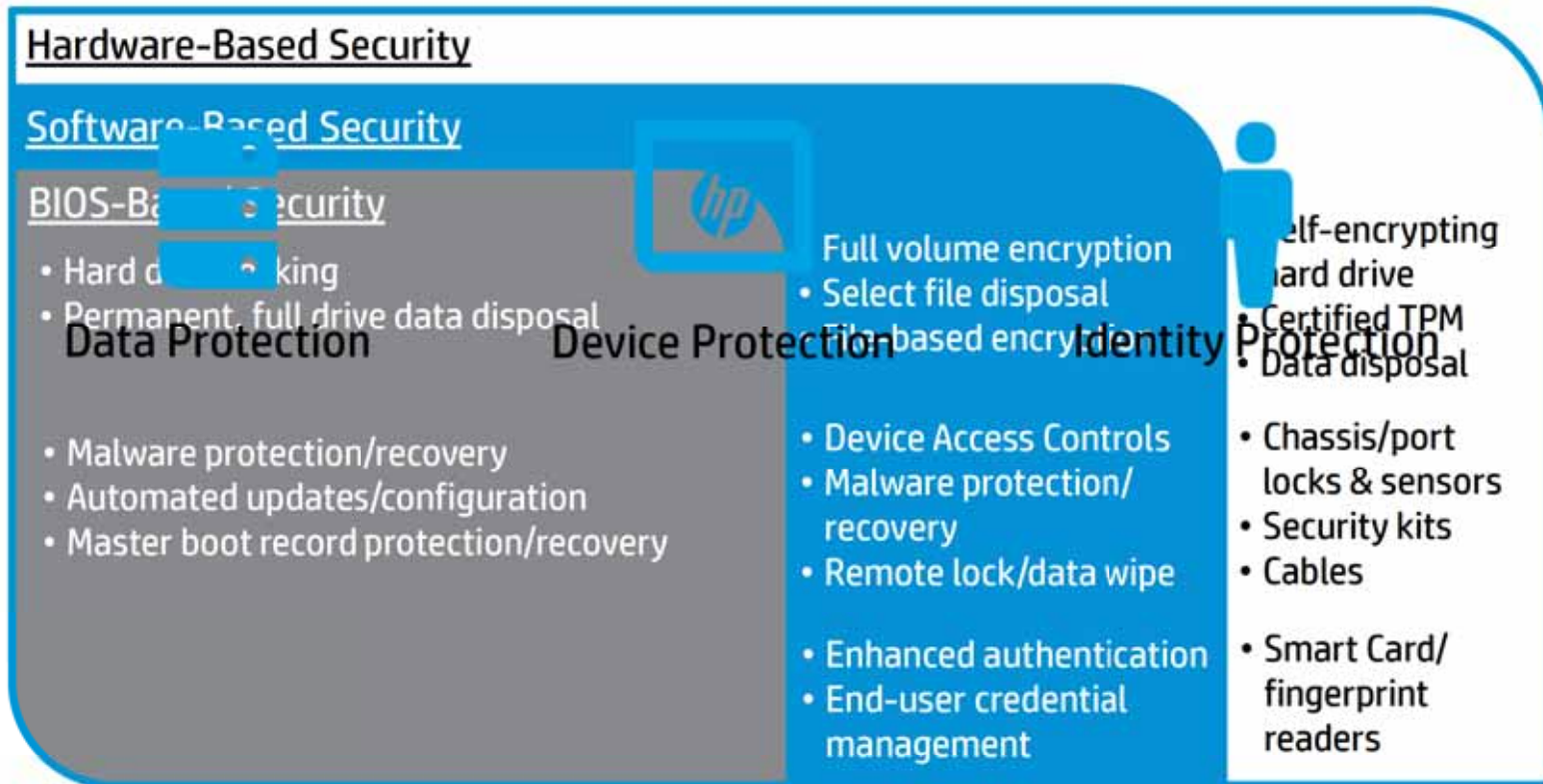
# Your Needs Drive Our Investments





# TCO - HP Client Security

Hassle-free, multi-layered security options to fit your business



1. Planned to be available August 2013



# HP Client Security – Differentiated Security Solutions

Hassle-free, multi-layered security options to fit your business

## Software-Based Security

### BIOS-Based Security

- **Secure Erase<sup>2</sup>** (saves up to \$100 in services)
- **Computrace Persistence<sup>3</sup>** protects remote lock/wipe functionality

- **File Sanitizer** to permanently selected files and folders (Win7)
- **Absolute Data Protect** - 4 year service included<sup>1</sup> for HP ElitePad, Elitebook Revolve with Win 8 (up to \$160 value)
- **Drive Encryption** included at no additional charge (up to \$60 value)
- **Device Access Manager with Just-in-Time Authentication**



Data Protection



Device Protection



Identity Protection

1. Requires Microsoft Windows

2. For the methods outlined in the National Institute of Standards and Technology Special Publication 800-88.

3. Computrace agent is shipped turned off, and must be activated by customers when they purchase a subscription. Subscriptions can be purchased for terms ranging for multiple years. Service is limited, check with Absolute for availability outside the U.S.







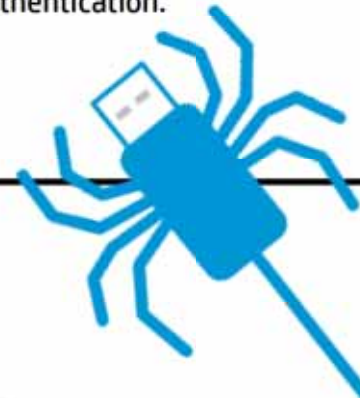
# HP's industry-leading security & manageability solutions

## Identity Protection

## Device Protection

## Data Protection

	Identity Protection	Device Protection	Data Protection
BIOS	<ul style="list-style-type: none"><li>• Ensure only authorized users can power on your PC with <b>HP Power-on Authentication</b> with their Fingerprint or Windows Password.<sup>1</sup></li></ul>	<ul style="list-style-type: none"><li>• Protect the Master Boot Record so that you can be sure what software your PC is booting.</li></ul>	<ul style="list-style-type: none"><li>• Ensure your hard drives must be attached to your PCs in order to work with <b>HP Automatic DriveLock</b>.</li><li>• Completely delete your data before repurposing, recycling, or servicing with <b>Secure Erase</b>.</li></ul>
Software	<ul style="list-style-type: none"><li>• Manage all your login credentials and policies in one place with <b>HP Credential Manager</b>, including single sign on policies.</li><li>• Avoid help desk calls by using <b>HP SpareKey</b><sup>3</sup> if a password is forgotten.</li></ul>	<ul style="list-style-type: none"><li>• <b>HP Just In Time Authentication</b> allows removable media be used for a short period after proper authentication.</li></ul>	<ul style="list-style-type: none"><li>• Trust your data is protected with <b>HP Drive Encryption</b>.<sup>2</sup></li></ul>



1. CMIT Desktops support a Power-on Authentication password set in BIOS only.  
2. Planned to be available August 2013  
3. Internet access required. Some websites and applications may not be supported

© Copyright 2013 Hewlett-Packard Development Company, L.P. The information contained herein is subject to change without notice.





# HP BIOS

The core of HP Business PC Reliability, Security, Manageability

- BIOS update error and attack protection reduce user downtime
- Automate BIOS management with remote configuration and update capabilities
- Firmware-level data, device and identity protection
  - Permanent data disposal
  - Self-encrypting drive management
  - Hard drive locking
  - Malware recovery



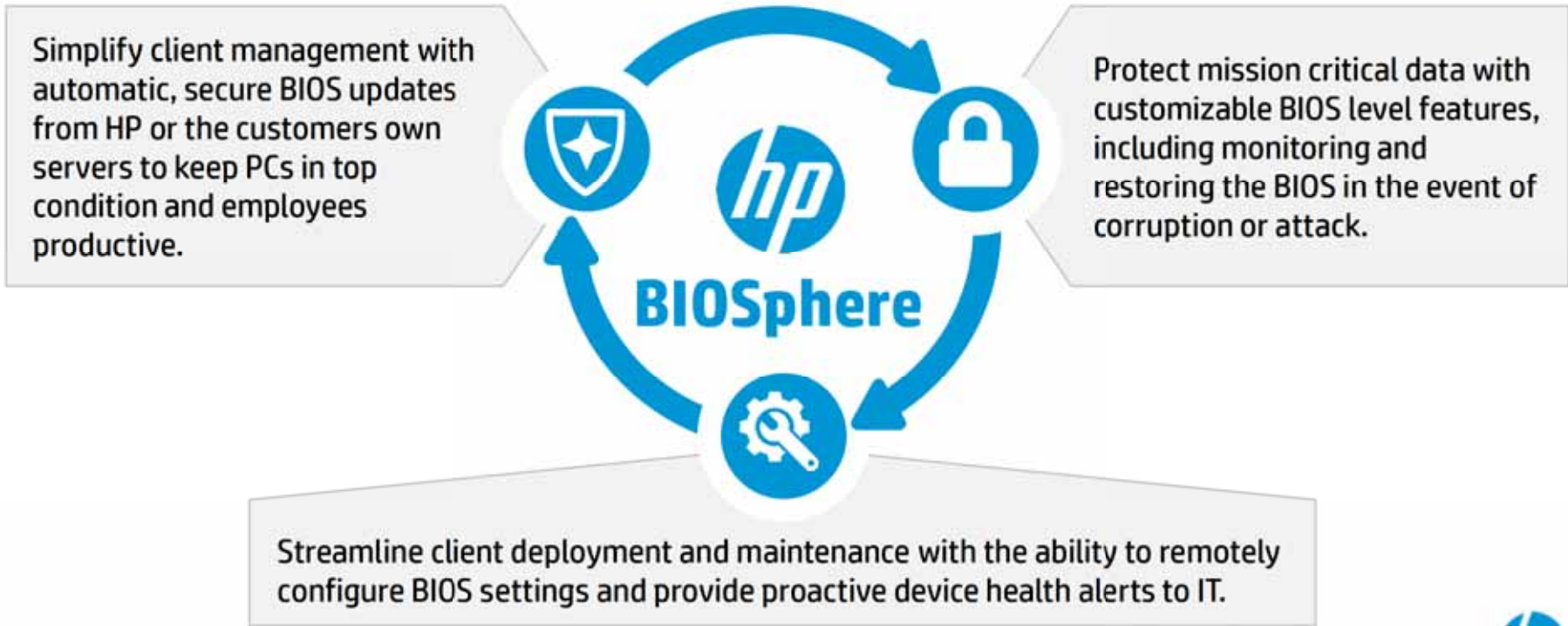
1. HP Tools partition with an HP BIOS required for automatic recovery. Business Desktops do not support this HP BIOS Protection auto-recovery feature.

HP CONFIDENTIAL. CDA REQUIRED UNTIL OCT. 1 2013



# HP BIOSphere

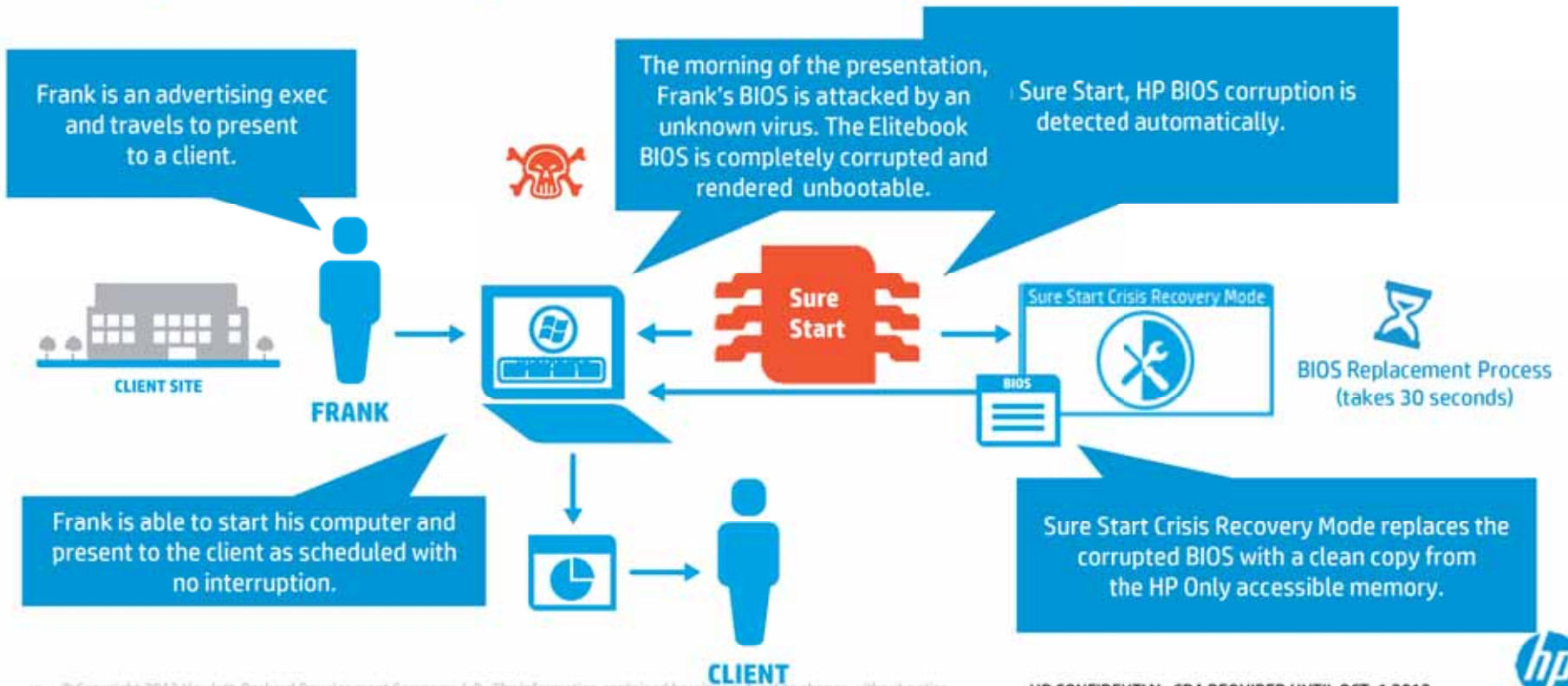
HP's industry-leading firmware ecosystem



**HP Unique Solution**

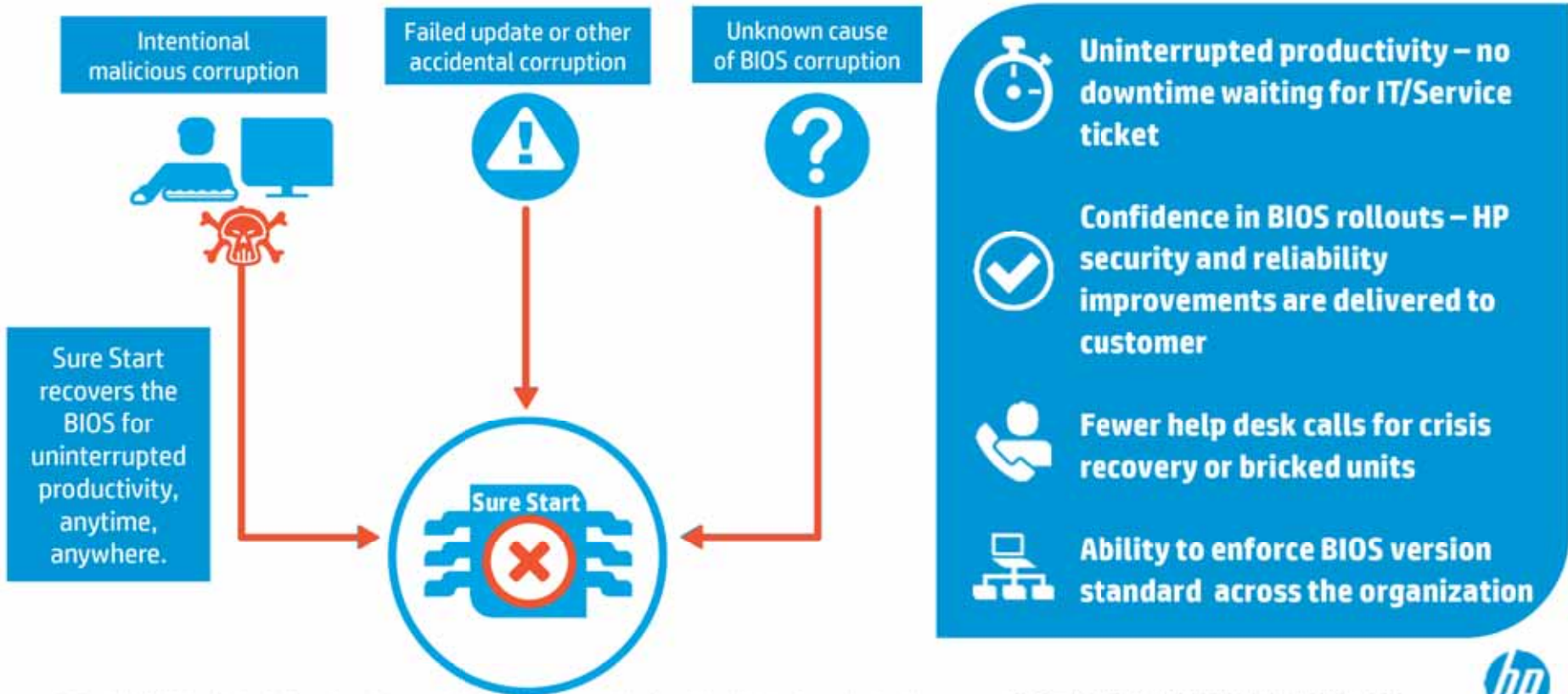
# HP BIOSphere with Sure Start Technology

## Industry-first self-healing BIOS



# HP BIOSphere with Sure Start Technology

HP Unique Solution



# Security and manageability go together



**How many devices  
and where ?**



Patch all systems?



Lost or stolen devices?



**Detect new devices on  
the network?**



Enforce  
security policies?



Manage remote and  
mobile devices?



# HP Client Management

Automate client management with industry-leading tools<sup>1</sup>



**Client  
Automation**



## Deployment & Migration

- Migration processes & tools
- Deployment of OS, software and system configuration

## Proactive Hardware & Software management

- Asset management
- Vulnerability management
- Software delivery & license compliance
- Hardware configuration & health alerts

## Remote Assistance / Help Desk

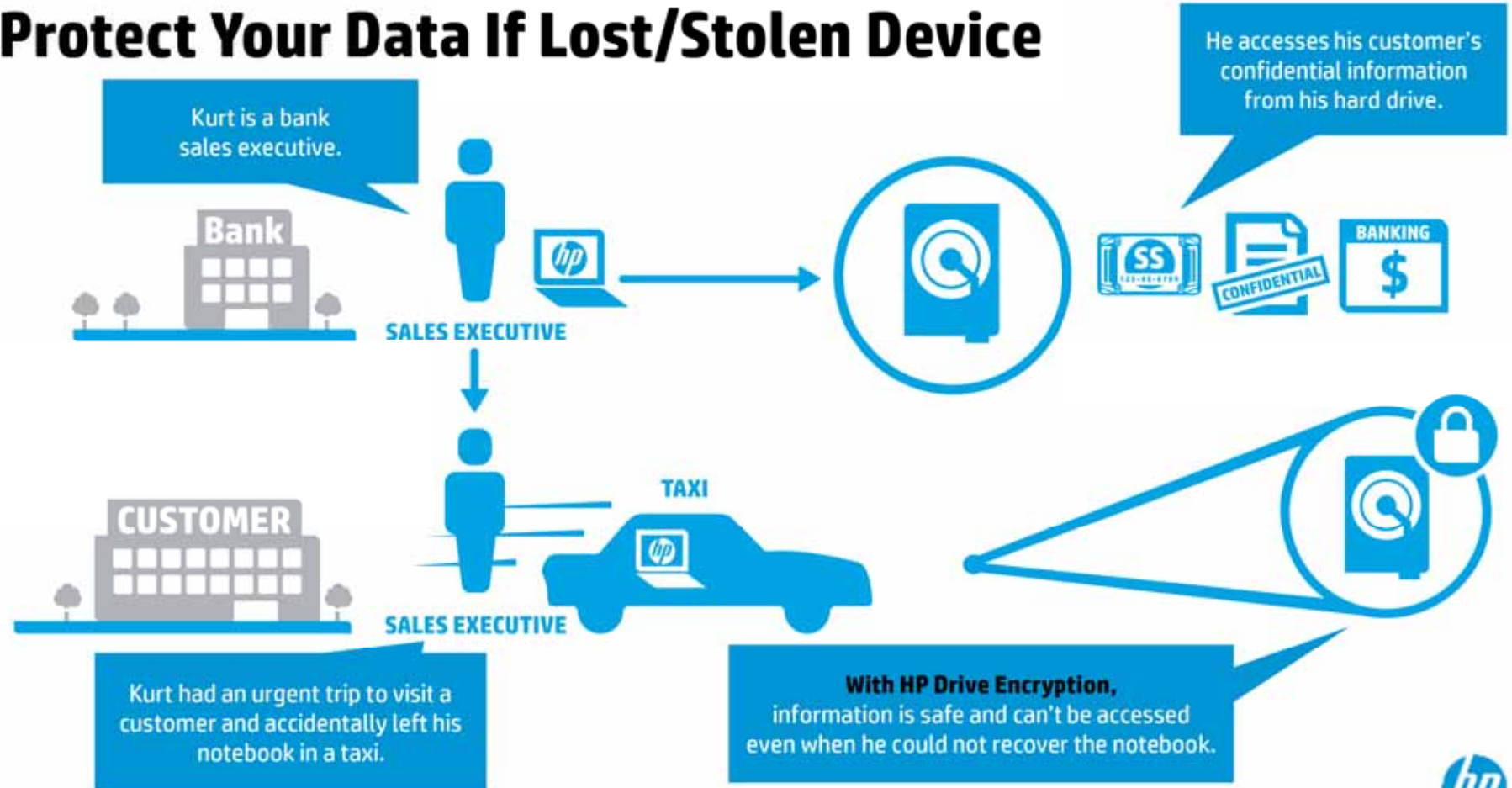
- Remote control
- Help desk ticketing
- vPro Out of Band Management

<sup>1</sup> HP Client Management solutions require Windows.

15 © Copyright 2013 Hewlett-Packard Development Company, L.P. The information contained herein is subject to change without notice.



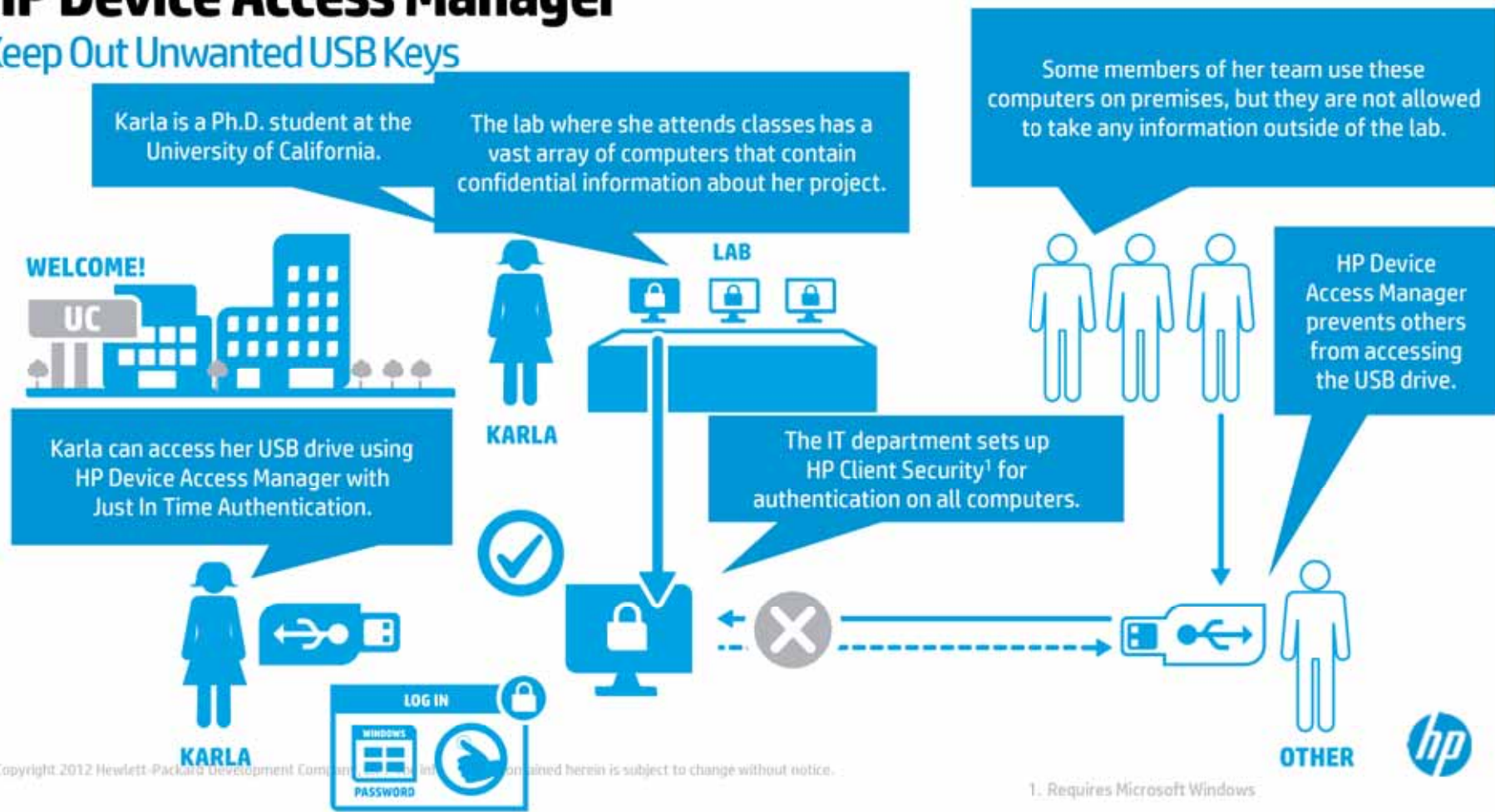
# Protect Your Data If Lost/Stolen Device





# HP Device Access Manager

## Keep Out Unwanted USB Keys

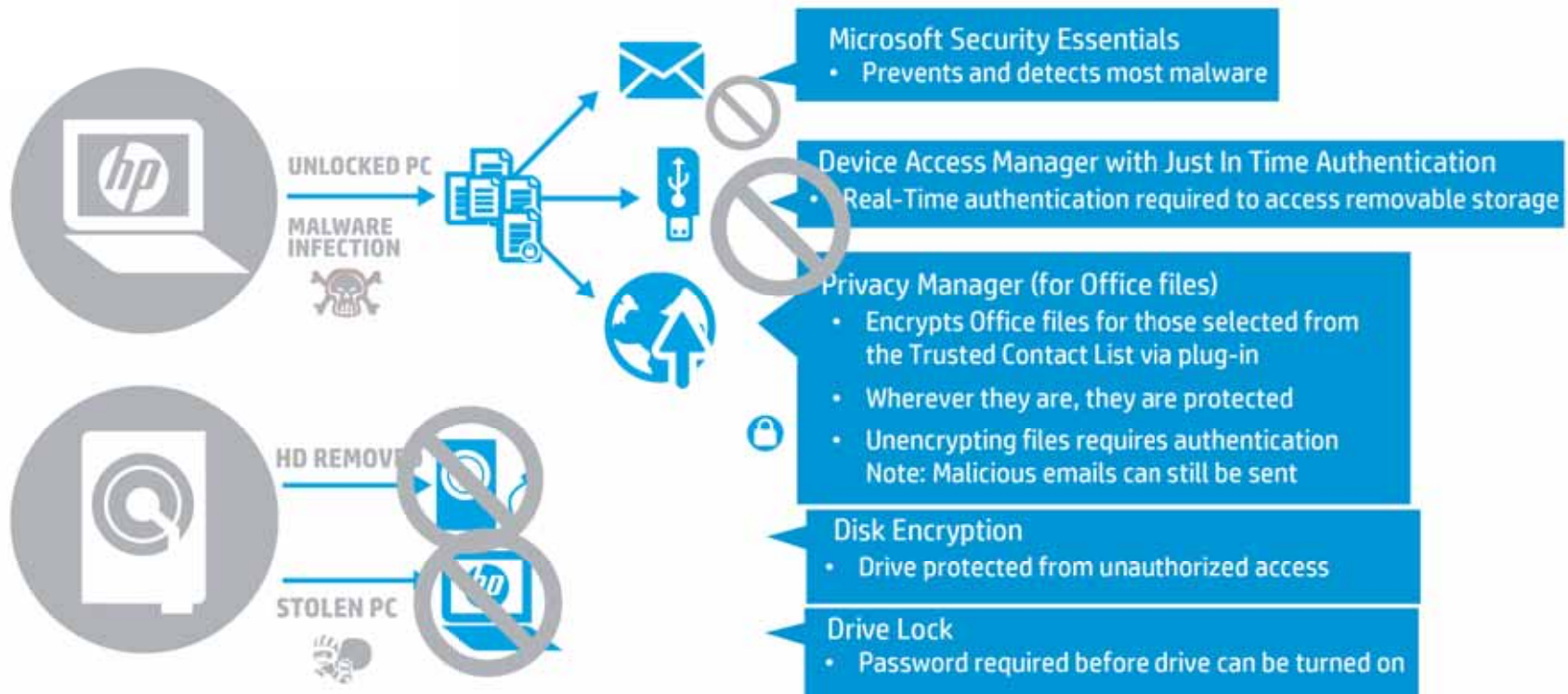


© Copyright 2012 Hewlett-Packard Development Company, L.P. All rights reserved. Information contained herein is subject to change without notice.

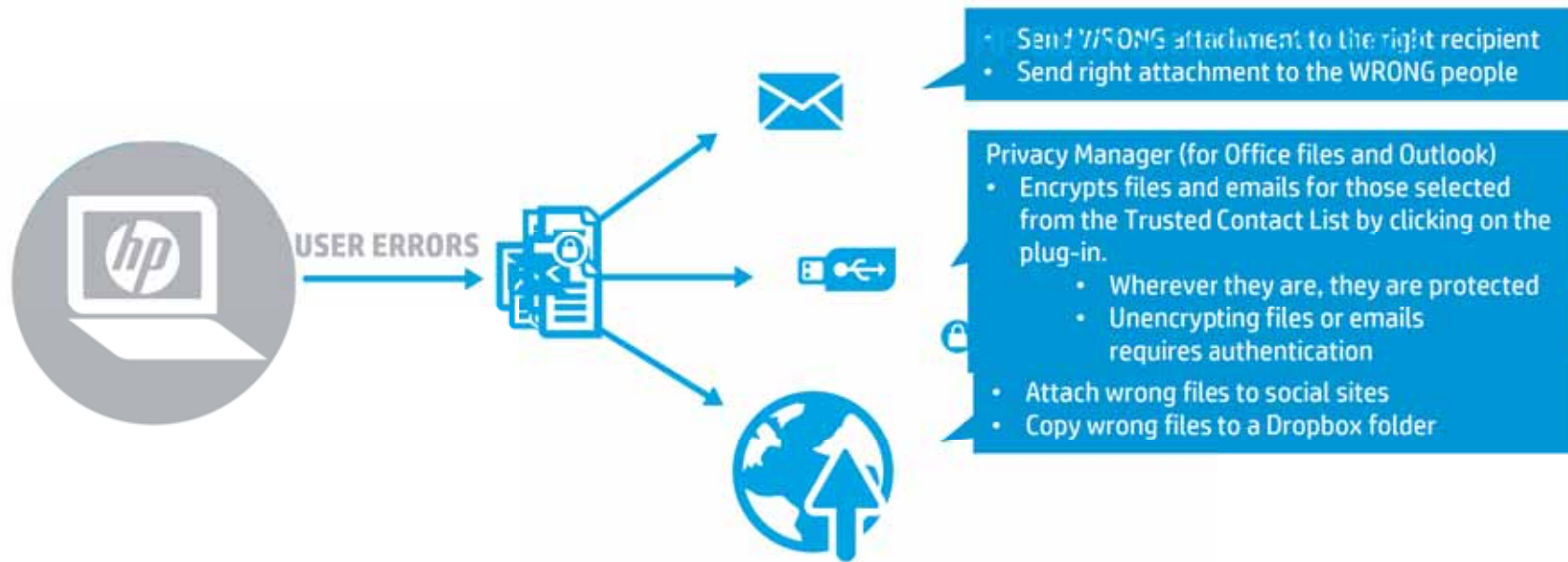
1. Requires Microsoft Windows

# Protect Critical Files From Exposure

## HP Client Security Solutions<sup>1</sup>



# Protect Critical Files From Exposure



# Industry unique enterprise mobile device management<sup>1</sup>



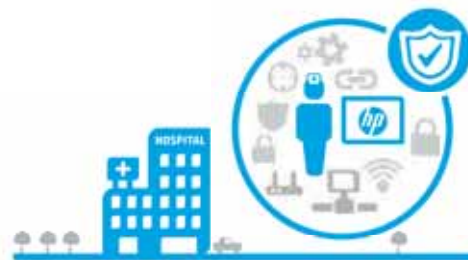
**Mass Activation of WWAN**



**Manage ElitePad Hardware**



**Protect Corporate / Personal Data**



**Geographic Policy-Based Enforcement**



**Find my PC**

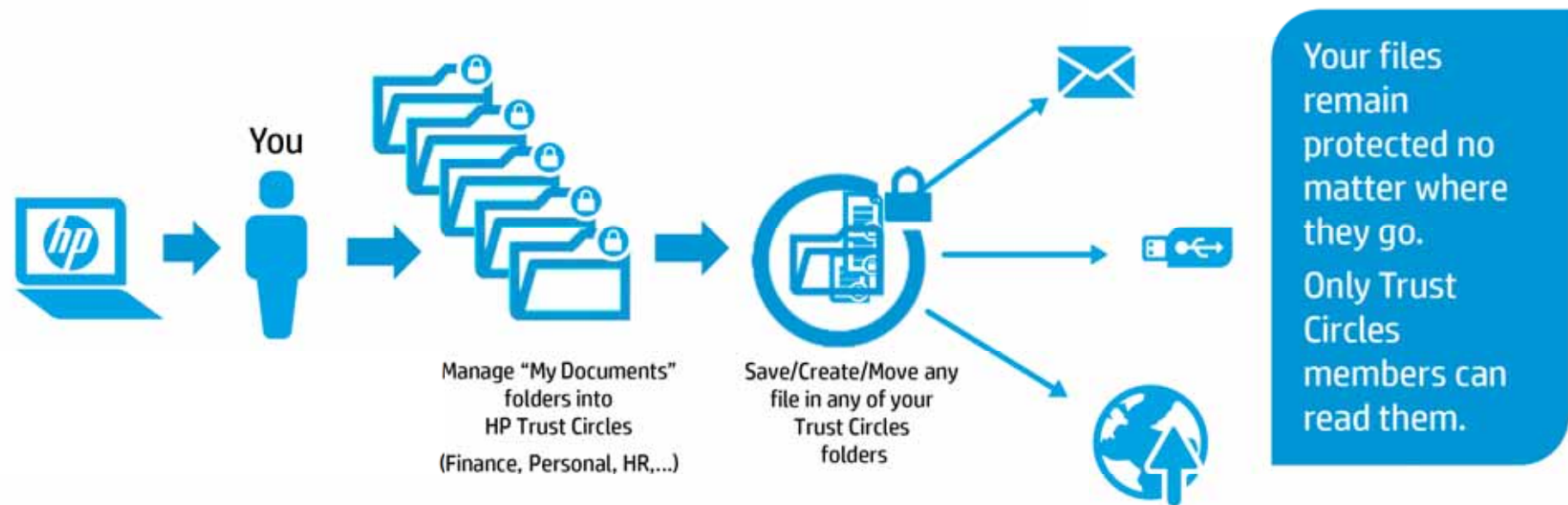


1. LANDesk software is sold separately. Managed devices must be connected to the management server. Requires active LANDesk maintenance service. Wipe functionality performs a "Windows 8 Reset" and requires Windows 8. Lock performs a Windows "Lock Computer."



# HP Trust Circles<sup>1</sup>

Keep sensitive information in safe hands



1. HP Trust Circles Standard, when included, allows up to 5 Trust Circles with up to 5 contacts in each Trust Circle. Optional Trust Circles Professional required for unrestricted number of Trust Circles and members contacts. Trust Circles Reader is available to allow a contact to participate in an invited Trust Circle. Requires Windows.



# Contatos



**Ricardo  
Lopes**  
**Gestor  
Clientes**  
[ricardo.lopes@hp.com](mailto:ricardo.lopes@hp.com)  
**913262847**



**Miguel  
Souto**  
**Gestor  
Parceiros**  
[miguel.souto@hp.com](mailto:miguel.souto@hp.com)  
**919109191**



**Filipe  
Guerreiro**  
**Gestor  
Clientes**  
[filipe.guerreiro@hp.com](mailto:filipe.guerreiro@hp.com)  
**210118958**

1. HP Trust Circles Standard, when included, allows up to 5 Trust Circles with up to 5 contacts in each Trust Circle. Optional Trust Circles Professional required for unrestricted number of Trust Circles and members contacts. Trust Circles Reader is available to allow a contact to participate in an invited Trust Circle. Requires Windows.

22 | © Copyright 2013 Hewlett-Packard Development Company, L.P. The information contained herein is subject to change without notice.



# Thank You

© Copyright 2012 Hewlett-Packard Development Company, L.P. The information contained herein is subject to change without notice.

